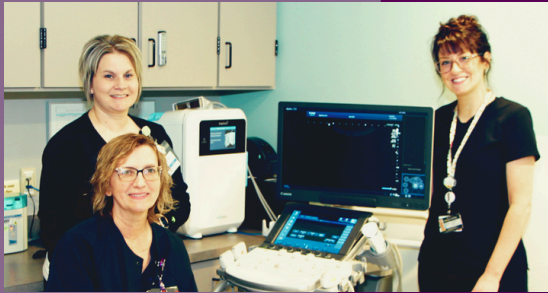


INVESTING IN YOU!

GIBSON AREA HOSPITAL + HEALTH SERVICES

1120 N Melvin St.
Gibson City, IL 60936



GAH EDUCATIONAL SPONSORSHIP PROGRAM



★★★★★ SERVICE EXCELLENCE
DEDICATION
INTEGRITY
EXCELLENCE
SAFETY
GROWTH
kindness
VISION
UNITY

COMPASSION
CARE
UNIVERSITY

SUPPORT
TEAMWORK
TRUST
RESPECT
INCLUSIVITY
PEOPLE ORIENTED
OPPORUNITY
QUALITY
PASSION

GAHHS
CULTURE



Gibson Area Hospital
& Health Services
GIBSON GETS IT

GAH EDUCATIONAL SPONSORSHIP PROGRAM

The GAH Educational Sponsorship Program was established to support individuals dedicated to pursuing a career in healthcare, with a passion for helping others. This program is our way of giving back to those who are committed to making a positive impact in healthcare. Scholarships will be awarded to hardworking, compassionate students who are not only driven to excel in their studies but also eager to join a hospital that prides itself on its outstanding culture of care, collaboration, and excellence. At GAH, we believe in nurturing the next generation of healthcare professionals who will continue our tradition of providing exceptional service to those in need.

- **GAH Pays in full annually with an established employment commitment after degree, certification, or licensure is attained.**
 - **Certificate Program - 2 Year Commitment**
 - **Associates Degree - 3 Year Commitment**
 - **Bachelor's Degree - 5 Year Commitment**
 - **Excludes housing & transportation.**
- **Scholarship recipients are responsible for income tax assessed on anything over \$5,250 awarded annually.**
- **Scholarship recipient may be required to participate in job shadowing within the field of study, during educational term.**
- **Potential for PRN positions available during educational term in some studies.**

Application process is based on organizational needs and funds available.

REQUIREMENTS:

Must be enrolled in an approved program listed below.

- **Certifications**
 - Medical Coding & Billing
 - Pharmacy Technician
 - EMT
 - CNA
 - CMA
 - LPN
 - IT
- **Associates Degree**
 - Radiology Tech (Ultrasound, MRI, CT, X-ray)
 - Surgical Technician
 - Sterile Processing Technician
 - Paramedic
 - Respiratory Therapist
 - RN
- **Bachelors Degree**

Students must maintain a C average

- **Upon successful completion of each semester, students must submit a copy of their grades/transcript to continue receiving funds. (Grades may be requested at any time during the semester.)**
- **If grades are not maintained or applicant withdraws from the course, the student will be required to pay back all funds accepted.**

WHY CHOOSE GIBSON AREA HOSPITAL + HEALTH SERVICES?

Choosing Gibson Area Hospital means joining a family-oriented culture where every employee is valued and supported. We believe in fostering a collaborative and supportive environment. Here, your professional growth is encouraged, and your personal well-being is a priority. Become a part of our amazing team and experience a workplace that truly cares about you and your family.

Benefits:

- Health, Dental & Vision
- Employer Paid Life Insurance
- Additional Life Insurance
- Aflac
- AAA
- Dependent Care Spending Account
- Flexible Spending Account
- LifeLock Identity Theft Protection (Essential & Premier)
- Employee Assistance Program
- Six Paid Holidays
- Bereavement Leave
- Short Term Disability
- Long Term Disability
- Retirement (Roth or Traditional, Match at 4%)